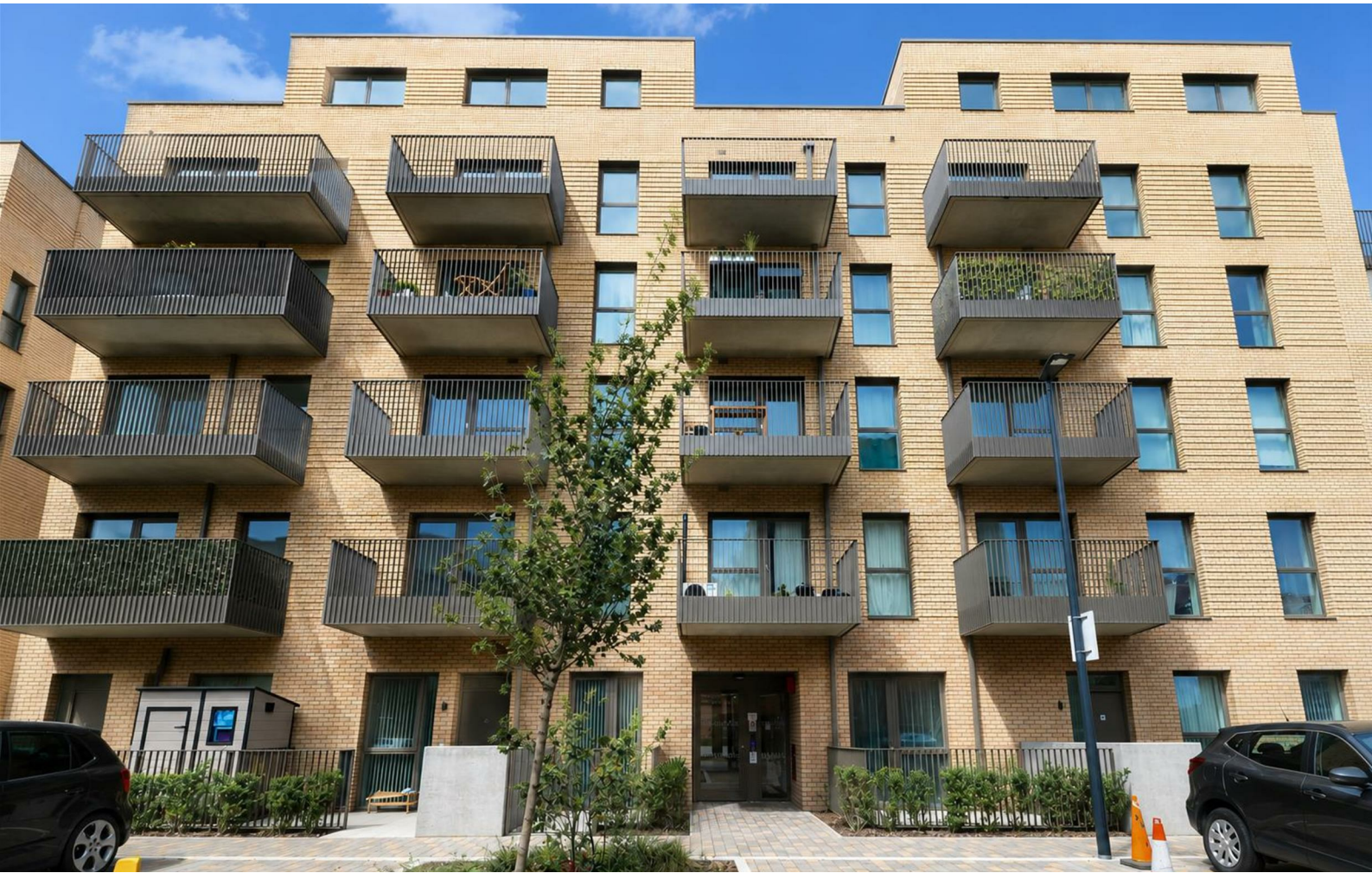


Cameron



Mead View Close, Harrow, HA1 4GS

- EPC Rating - B
- Furnished property
- Sorry, no parking
- Modern throughout
- Just 23 minutes to Oxford Circus
- Students very welcome
- Available end of August 2026
- Luxury apartment
- Close to local station
- Large balcony space

£1,650 PCM

arla | propertymark
PROTECTED

naea | propertymark
PROTECTED

Cameron Estate Agents
195 High Street,
Middlesex, Uxbridge, UB8 1LB

E: uxbridge@cameron.co
T: 01895252000

www.cameron.co

Whilst every care has been taken to ensure the accuracy of these particulars, none of the statements contained herein are to be relied upon as representations of fact. These particulars do not constitute an offer or contract.

Description

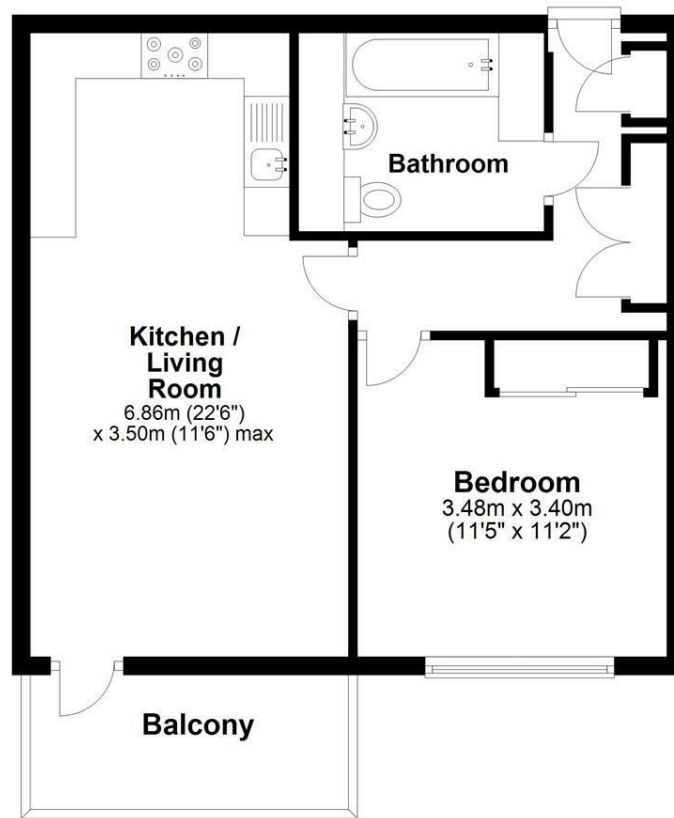
Cameron are delighted to be instructed on yet another, luxury, one bedroom apartment built by Barratt Homes in the Eastman Village Development. The apartment is located on the first floor and offers; secure entry phone systems, luxury bathroom with large mirrored cupboard, two large storage cupboards (one wish is home to the washer/dryer), large bedroom with built-in wardrobes, kitchen with integrated white goods including a dishwasher and full size fridge / freezer. The kitchen is open plan to the living space which leads to the spacious private balcony to enjoy on a summer evening. Presented to the market furnished and available to take possession end of August 2026. The property is located close to all major road links, public transports and local amenities Call NOW before this apartment is secured.

IMPORTANT NOTICE

These particulars have been prepared upon information supplied by the Vendor and should be verified by your surveyors and solicitors. In accordance with the Property Misdescriptions Act 1991 we have prepared these sales particulars as a general guide to give a broad description of the property. They are not intended to constitute part of an offer or contract. We have not carried out a structural survey and the services, appliances and specific fittings have not been tested. All photographs, measurements, floor plans and distances referred to are given as a guide only and should not be relied upon for the purchase of carpets or any other fixtures or fittings. Lease details service charge and ground rent (where applicable) are given as a guide only and should be checked and confirmed by your solicitor prior to exchange of contract

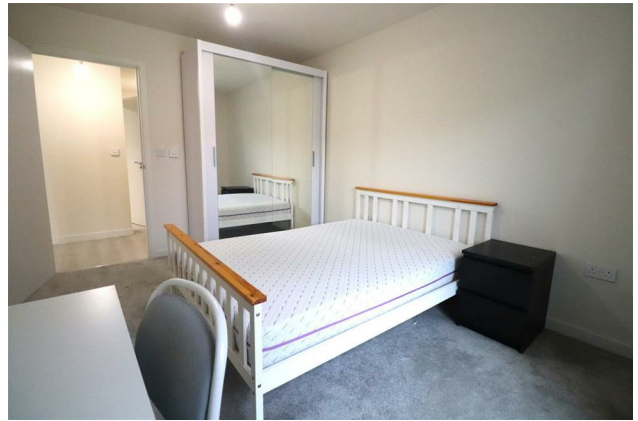
First Floor

Approx. 48.0 sq. metres (516.6 sq. feet)



Total area: approx. 48.0 sq. metres (516.6 sq. feet)

Cameron



Whilst every care has been taken to ensure the accuracy of these particulars, none of the statements contained herein are to be relied upon as representations of fact. These particulars do not constitute an offer or contract.